


Hall 4  
Stand No. C52



# Serbia

The tradition  
of producing excellence



The tradition  
of producing excellence

# Content

Albon Engineering & Manufacturing .....	6
Aledjo .....	8
Midmas Factory of Transformers .....	10
Ming .....	12
Perfom .....	14
Ppt Petoletka .....	16
Resor .....	18
Sanvi .....	20
Servoteh .....	22
Vesimpex .....	24
Chamber of Commerce and Industry of Serbia .....	26
Development Agency of Serbia .....	27

# About Serbia

## GENERAL DATA

- Location: Southeastern Europe, central part of the Western Balkans
- Geographic coordinates: 44 00 N and 21 00 E
- Territory: 88.499 km<sup>2</sup>
- Population: 7 million (the data for AP Kosovo and Metohia excluded)\*
- Borders with: Hungary, Romania, Bulgaria, Macedonia, Albania, Montenegro, Bosnia and Herzegovina and Croatia
- Capital city: Belgrade, circa 1.6 million inhabitants
- State organization: Parliamentary Republic
- Official language: Serbian
- National currency: Serbian Dinar RSD
- Time zone: GMT+1
- GDP (2017): €39.2 bn

## FAVOURABLE BUSINESS ENVIRONMENT

- Functional infrastructure
- Low operating costs
- Fastest average Internet speed in the region

- Value Added Tax and Corporate Tax lowest in the region
- Credit ratings: Fitch: BB/stable; Moody's: Ba3/stable; S&P: BB/positive

## ADVANTAGES OF INVESTING IN SERBIA

- Favorable geographic position, owing to which any shipment can reach any location in Europe within 24 hours
- Highly educated and competitive labor force
- Restructured and stable financial system
- Simple procedures for a company start-up and registration
- Simple procedures for foreign trade transactions and foreign investments
- State level incentives

## FAVORABLE TAX REGIME

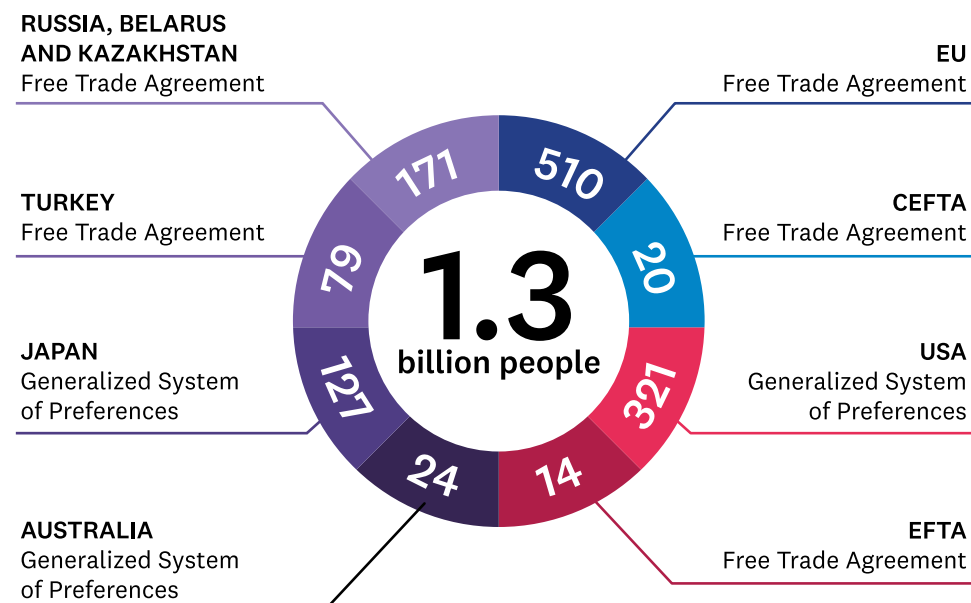
- Tax rate on personal income of 10%
- Corporate profit tax rate of 15%
- VAT rate: General – 20%  
Special – 10%

## FREE TRADE AGREEMENTS

Goods made in Serbia benefit from several Free Trade Agreements and Generalized System of Preferences which provide simplified placement on markets with more than 1.3 bn people.

- Stabilisation and Association Agreement with the EU
- CEFTA Agreement
- Agreement with the EFTA members
- Agreement with the Russian Federation, Belarus and Kazakhstan
- Agreement with Turkey
- SAD (GSP)
- Japan (GSP)
- Australia (GSP)

# Trade agreements with Serbia



# Albon

## Engineering & Manufacturing

Dositejeva 31,  
22310 Šimanovci, Serbia  
P: +381 22 40 85 00  
F: +381 22 40 85 01

[www.albonplc.com](http://www.albonplc.com)



UK Company, operating in Serbia, world class supplier, we want to amplify our market share globally.

We are specialised in high volume diesel or petrol engine components, meaning parts made from forged and casted blanks.

Albon is striving to maintain high standards at all levels of business. Quality, Design and Products reliability has always been on the top of our agenda.

30 years of experience made us world class supplier and we manufacture connecting rods for both: diesel and petrol applications, ranging from low, 1L engine to 78 L engine-marine or off highway applications.

Key Performance and Growth factors are skills and experience, incorporated in our design.

Our policy has always been to control manufacturing process of connecting rods, so that we can offer the highest quality, accuracy and integrity from start to finish. That is why we are nominated TIER1 supplier (in the UK, USA, Europe...) to the majority of our Customers.

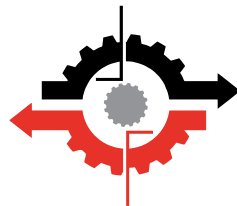
We manufacture prototypes in volumes of 20 and up to several hundreds.



# Aledjo

Ul. Borčanskih žrtava 1914/53,  
11211 Borča, Serbia  
P: +381 64 28 28 069  
F: +381 11 27 21 222  
E: office@aledjo.com | obradovic.aledjo@gmail.com

[www.aledjo.com](http://www.aledjo.com)



**ALEDJO D.O.O.**

CNC machining- production of whole parts as well as already existing parts is done on the CNC machines. We make parts for a wide variety of industries, needs for different institutes, medicinal devices, microscopes, x-rays, military industry, thermovision and thermal systems, cameras and surveillance systems and the car industry.

With the CNC machines and lathes we also possess machines for scraping, milling, drilling, gouging, forging, reaming and welding.

Besides serial production, specialties of the company is the production of smaller individual parts as well as tools.

Aledjo has the ISO 9001:2015 certificate and applies international standards prescribed for the processing industry.

The company is looking for a partner in the machining industry for a processing service making parts and tools on CNC machines.



# Midmas

## Factory of Transformers

Senčanski put bb,  
24300 Bačka Topola, Serbia  
P: +381 24 71 87 55 | +381 24 71 88 60  
M: +381 69 10 82 867  
E: info@midmas.com | www.midmas.com

[www.midmas.com](http://www.midmas.com)

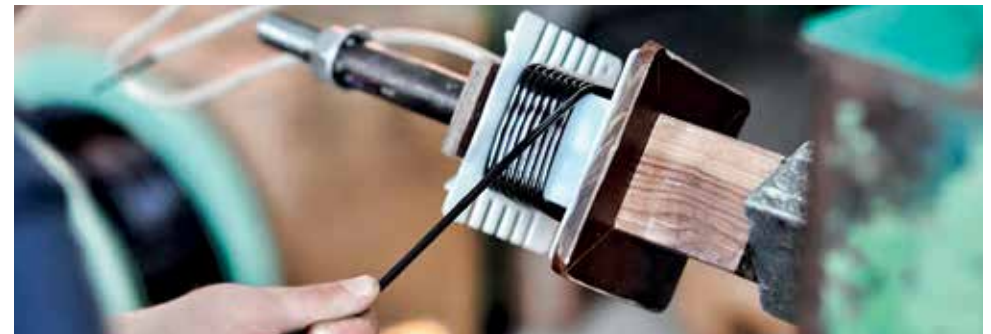


Midmas Transformer Factory is a renowned manufacturer of dry transformers, with 40 years of the family tradition. In Bačka Topola, this production currently employs about 30 workers. Bačka Topola has been traditionally the ideal environment for the production. The personnel that worked in this area in the past have been appreciated, and the invention has been proven in the tradition of over 40 years of similar production in Bačka Topola.

Today we export over 70 percent of production mainly to the EU market and most buyers are from Italy, Hungary, Slovenia, Poland, Ukraine, Russia, Belarus, Bosnia and Herzegovina, Greece, Serbia, etc.

Midmas is located in the north of Serbia, about 40km from the border with the EU, on the railway and highway Belgrade - Budapest.

Having kept the family tradition of transformer production in Bačka Topola since 1979, Midmas has played its role in this era of development, and interacted closely with customers, providing the highest level of products and services. High performance manufacturing equipment and continuous improvement of management techniques combine to enhance our reputation for quality.



# Ming

Bulevar Nikole Tesle 3/II/200,  
11080 Zemun, Serbia  
P: +381 11 319 67 82 | +381 11 319 69 91  
E: office@mingbgd.com | manager@mingbgd.com

[www.mingbgd.com](http://www.mingbgd.com)



Production plant in city of Niš, in south-eastern Serbia, consists of two units: Forge and Machining Facility, occupying the surface area of 30000 m<sup>2</sup>:

Throughout the previous years, we have continuously expanded our product range. Since our goal is to satisfy the new demands of ever-growing market we are steadily expanding our product range. We export over 95% of our products, mostly to EU countries. For many years now, we have successfully exported our products to Germany, Czech Republic, Poland, Slovakia, France, Italy, Hungary, China, Russia...

We can manufacture forged pieces ranging from 0.5 up to 120 kilograms. About 55% of the production is intended for railway industry and 45% is for other branches of metal industry (automotive, agriculture industry etc.)

Part machining and tool manufacturing are performed at the new CNC processing centers. Our team of highly-qualified young engineers provides a complete logistic support for smooth operation of processing centers and ensures betterment of their efficiency. Besides part processing, the Machining Facility is fully equipped and enabled for the manufacturing of the most complex die forged tools.



# Perfom

Kneza Miloša 165,  
31210 Požega, Serbia  
P: +381 31 82 50 51 | +381 31 71 43 80 | +381 31 81 66 56  
F: +381 31 71 59 55  
E: office@perfom.rs

[www.perfom.rs](http://www.perfom.rs)



Perfom is a family owned company with extensive experience in perforation, punching and metal forming.

The principles, with respect of all our employees as our associates doing the same task. We have combined the latest cad-cam technologies and the best artisan tradition.

We export to Germany, France, the Netherlands, Denmark, Sweden, Switzerland, Slovenia, Croatia, Bulgaria, Bosnia and Herzegovina, Macedonia, Montenegro.

Our skills and products are:

- Metal sheet products made by punching, perforation and metal forming (cutting, bending, rolling, welding).
- Perforated and embossed metal sheets and panels
- Perforated metal screens and parts for recycling industry, machine building and industrial maintenance
- Metal sheet parts for heat transfer solution
- Antiskid (safety) gratings and stair treads
- Perforated gratings and parts for car carriers
- production of standard and custom made metal sheet products according to drawing
- In house new product development and tooling

We are driven by quality, responsibility and flexibility in production and cooperation.





# Ppt Petoletka

Cara Dušana 101,  
37240 Trstenik, Serbia  
P: +381 37 71 12 22 | +381 37 71 59 59  
F: + 381 37 71 22 99  
E: export@petoletka.com

[www.petoletka.com](http://www.petoletka.com)



The core business of Ppt Petoletka is: research, development, designing, production, testing, sales, engineering and maintenance of hydraulic and pneumatic devices and systems for various areas.

Production program includes:

- Hydraulics
- Special-purpose hydraulics
- Cylinders
- Servo-steering gears
- Brake technique
- Industrial pneumatics
- Lubrication technique



# Resor

Miloša Obilića BB,  
18240 Gadžin Han, Serbia  
PIF: + 381 18 86 01 52  
E: info@resor.rs

[www.resor.rs](http://www.resor.rs)

**RESOR** 

Company Resor was established in 1992 as a company for production of new and repair of old utility vehicle bodies.

We began with 3 engineers and 12 workers in the workspace of 600 m<sup>2</sup>. Today, the company has 12 engineers and 57 workers. The workspace covers 5,700 m<sup>2</sup> on the land of 1.6 ha. Office space covers 250 m<sup>2</sup>. There is also the most equipped chamber for painting of cars.

Our products can be found in 102 towns throughout Serbia as well as Macedonia, Bosnia and Herzegovina and Montenegro. The achieved results have shown so far, that the company Resor is becoming a regional leader in producing vehicles for special purposes.

We install our bodies to chasses of well-known world producers such as Iveco, Mercedes, Mitsubishi, Volvo, Dap, FAP, or at customer`s request. In production, we use only recognized components by Parker, Moro, Yurop, Pratisoli, OMF.

From its very start, Resor has recorded positive business results, and increased its production volume and number of employees. The company has a very good cooperation with the Faculty of Mechanical Engineering of the University of Niš, which is our base for recruiting highly educated personnel, and our partner on some projects.

Our plans are not limited only to the regional market. Our ambitions go beyond, and we believe that with good quality of products, and constant application of innovations, it is possible to make these ambitions a reality.



# Sanvi

Istočna radna zona bb,  
37240 Trstenik, Serbia  
P: +381 37 71 77 00  
F: +381 37 71 77 01  
E: office@sanvi.co.rs

[www.sanvi.co.rs](http://www.sanvi.co.rs)



Sanvi is a privately owned business company that has been manufacturing hydraulic equipment since 1991. Company owns around 3000m<sup>2</sup> and rent over 2000m<sup>2</sup> closed areas settled in Trstenik, centre of hydraulics and pneumatics in Former Yugoslavia.

Started as a hydraulic service, now days Sanvi became a local leader in manufacturing hydraulic cylinders for light to heavy duty applications in a wide variety of markets.

Hydraulic cylinders are produced in standard ranges as well as product series tailored to customer specific instructions for virtually all areas of engineering and vehicle construction (variety of markets). Sanvi produces custom made, engineered hydraulic cylinders max. piston diameter 1160mm, stroke 2000mm or max. piston diameter 500mm, stroke 8000mm. The offer of these cylinders is being widened all the time and production technology is being currently modernized.

Our product programme covers a wide range of custom made hydraulic power units. Our engineering team pay a great attention in designing process of each application to assure fulfilling customers needs and expectations.

We also offer machining on demand. Most popular services are deep hole drilling (gun drilling from 3-30mm and length up to 2000mm, BTA from 30-220 and length up to 4000mm), honing (diameter up to 600mm and length up to 8000mm), CNC turning (up to diameter 1400mm), milling, grinding, chrome plating, etc.

Sanvi is a fast growing and fast learning company with an annual turnover of around 1,5 M.euros (Million Euros). We employ 50 highly specialized experienced workers capable for solving all of our client's demands. All products are manufactured according to ISO 9001.

Sanvi is present in all EX Yugoslav Republics, Russian and EU countries markets.



# Servoteh

Ugrinovačka 163,  
11272 Belgrade, Serbia  
P: + 381 11 31 41 564 | +381 11 373 29 59  
M: +381 60 35 50 020  
E: office@servoteh.com

[www.servoteh.com](http://www.servoteh.com)

**SERVOTEH**  
COMPLETE AUTOMATION

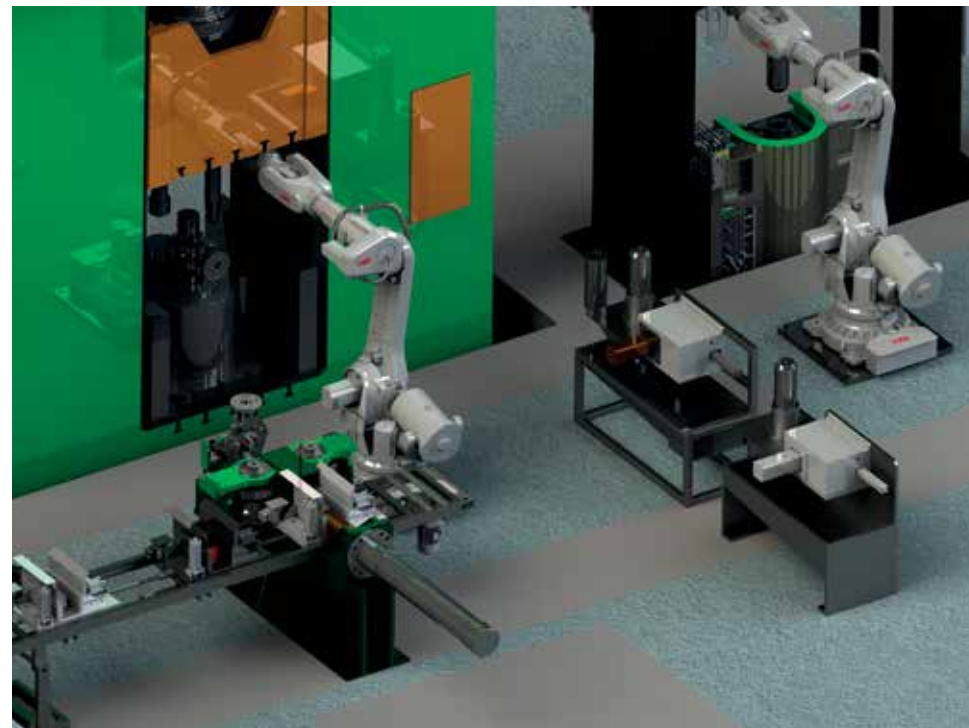
Servoteh is a family owned company, founded in 2002. The company's headquarters is in Belgrade, Serbia.

Today, after 17 years of work and continuous development, more than 70 mechanical and electrical engineering experts design, produce and launch various automation systems, devices, tools, machines, production lines and entire plants in:

- Food industry
- Pharmaceutical industry
- Paper industry
- Metalworking and Metallurgical industry
- Automotive industry
- Aerospace industry
- Defense industry

Our project bureau for electronic and mechanical CAD design, as well as for the development of all PLC and CNC softwares, along with the production plant using precise CNC and CAM technologies, and our assembly and service department, pose an advantage for competitive market presence.

Partnership agreements with world leaders in industrial automation (Siemens, Robert Bosch, ABB and SKF) contribute to the monitoring of modern technological solutions and their application in our own solutions of complex projects.



# Vesimpex

Patrijarha Dimitrija 24,  
11090 Belgrade, Serbia  
P|F: +381 11 40 49 070  
E: info@vesimpex.rs

[www.vesimpex.rs](http://www.vesimpex.rs)



Vesimpex is experienced in developing and implementing industrial solutions and services, including:

- Panel building services according to EU standards for control and power distribution cabinets
- Industrial automation for machines and processes
- Mechatronic solutions and robotic cells for palettizing, packing, handling

We are ready to offer services for entire project lifecycle: analysis and planning, design, equipment delivery, factory - and on site assembly, commissioning and full operation support.



Resavska 13-15,  
11000 Belgrade, Serbia  
P: +381 11 33 00 910  
bis@pks.rs

[www.pks.rs](http://www.pks.rs)

## RELIABLE PARTNER

Chamber of Commerce and Industry of Serbia is an independent, modern and responsible non-budgetary institution, a national association of all Serbian businesspeople, which serves the best interests of its members and the Serbian economy, owing to its tradition, experience and knowledge.

Our key commitment is to make Serbia visible as a market economy country, with investment opportunities, open borders, and ready to join the European trends in a competitive way.

A century and a half of the Serbian chamber system tradition and the developed chamber network, Representative Offices abroad, are the guarantor of efficient implementation of the support mechanisms for the economy and businesspeople in their activities.

We have been and will remain your responsible partner and support to your business through:

- Representing interests of our members before the governmental bodies and institutions
- Exercising public powers by issuing various documents
- Upgrading international economic cooperation
- Promoting the economy in the country and abroad
- Disseminating business information to our members
- Consultancy services
- Business education
- Fostering good business practice and business ethics
- Work of Courts and Arbitration hosted by CCIS



**RAS**

Development Agency of Serbia

Kneza Miloša 12,  
11000 Belgrade, Serbia  
P: +381 11 33 98 900  
office@ras.gov.rs

[www.ras.gov.rs](http://www.ras.gov.rs)

Development Agency of Serbia (RAS) offers a wide range of services on behalf of the Government of the Republic of Serbia, including support of direct investments and export promotion, and leads the implementation of projects with the aim of improving Serbia's competitiveness and reputation in order to support the economic and regional development.

As a newly established agency, RAS builds upon the knowledge of the former Serbia Investment and Export Promotion Agency (SIEPA) and National Agency for Regional Development (NARD) and brings improvements required to meet the needs of a modern economy.

RAS will serve as a one-stop-shop for both domestic and international companies with a single goal of building a strong and sustainable economy, and increasing the quality of life for the people in Serbia.



# Notes

---

---

---

---

---

---

---

---

---

---

---

---

---

---

---

---

---

---

---

---

---

---

---

---

---

---

---

---

---

---









The tradition  
of producing excellence



Chamber of  
Commerce and  
Industry of Serbia

Resavska 13-15,  
11000 Belgrade,  
Serbia

Phone:  
+381 11 33 00 910

bis@pks.rs  
www.pks.rs



RAS

Development  
Agency of Serbia

Kneza Miloša 12,  
11000 Belgrade,  
Serbia

Phone:  
+381 11 33 98 900

office@ras.gov.rs  
www.ras.gov.rs